

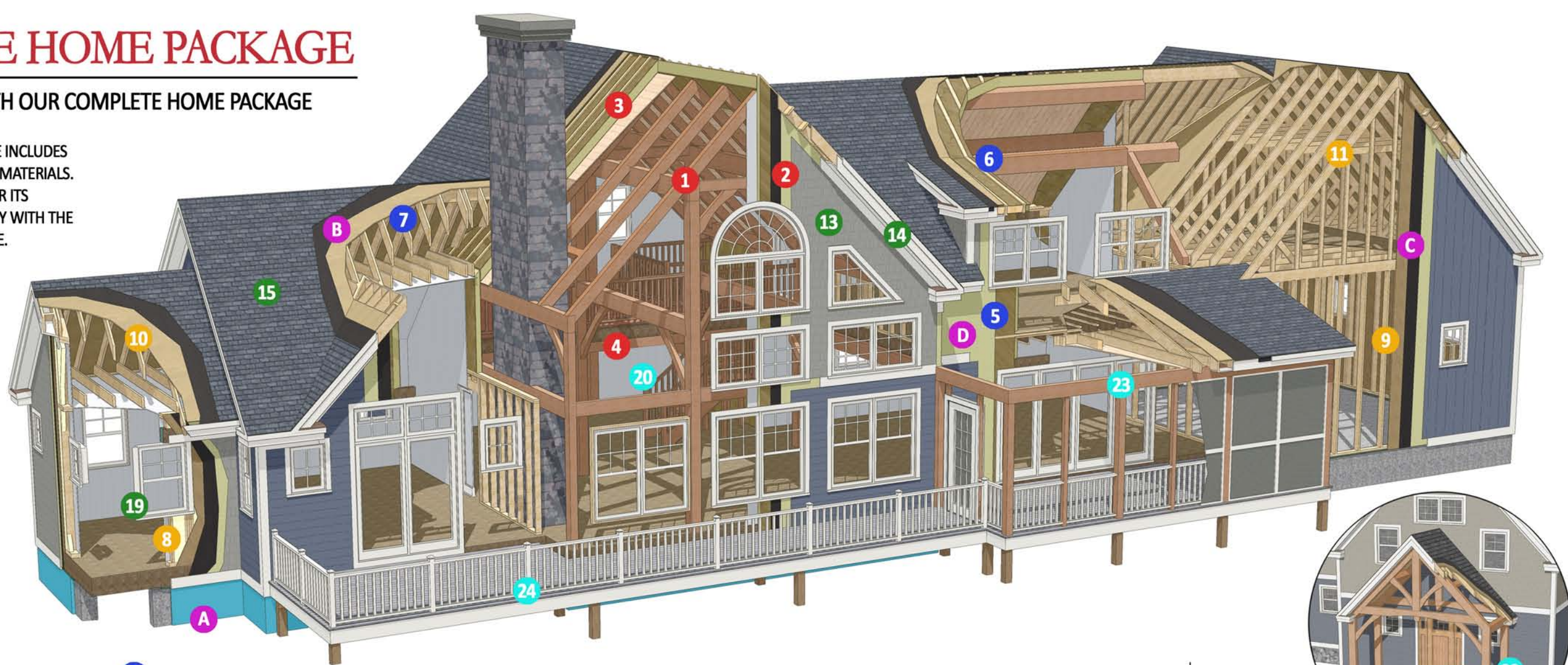
# DAVIS FRAME HOME PACKAGE

## HERE'S WHAT YOU GET WITH OUR COMPLETE HOME PACKAGE

THE DAVIS FRAME STANDARD PACKAGE INCLUDES AN EXTENSIVE LIST OF COORDINATING MATERIALS. EACH MATERIAL HAS BEEN CHOSEN FOR ITS PREMIUM QUALITY AND COMPATIBILITY WITH THE STYLE AND STRUCTURE OF YOUR HOME.

THE STRUCTURAL COMPONENTS CHOSEN FOR EACH HOME ARE BASED UPON YOUR SPECIFIC SITE LOADINGS AND LOCAL BUILDING CODES.

NO MATTER WHAT MATERIALS YOU CHOOSE, YOU'LL GET THE SAME UNWAVERING COMMITMENT TO QUALITY AND ATTENTION TO DETAIL WHILE BENEFITING FROM OUR MORE THAN 20 YEARS OF EXPERIENCE IN CRAFTING AUTHENTIC TIMBER FRAME HOMES.



### TIMBER FRAME CONSTRUCTION:

1. TIMBER FRAME – MANY CHOICES
  - FRAME TYPE
  - WOOD SPECIES
  - CHAMFER
  - FINISH
  - BRACE TYPE
 FRAME INCLUDES TRADITIONAL MORTISE AND TENON JOINERY, WITH OAK PEGS AND HARDWOOD SPLINES WHERE NECESSARY.
2. EXTERIOR WALL SYSTEM (R-16 TO R-26)
  - STRUCTURAL INSULATED PANELS (SIPs)
  - ½" GYPSUM WALL SHEATHING.
3. ROOF SYSTEM (R-30 TO R-40)
  - PRE-FINISHED TONGUE & GROVE PINE OR GYPSUM CATHEDRAL CEILINGS
  - STRUCTURAL INSULATED PANELS (SIPs)
  - VENTED ROOF SYSTEM: 1x3 STRAPPING @ 16" O.C. WITH 5/8" CDX ROOF SHEATHING.
4. 2ND FLOOR SYSTEM
  - MANUFACTURED I-JOISTS
  - ¾" ADVANTECH SUBFLOOR

### STRUCTURAL PANEL CONSTRUCTION:

5. EXTERIOR WALL SYSTEM
  - STRUCTURAL INSULATED PANELS (SIPs)
6. PANEL ROOF SYSTEM
  - TIMBER PURLINS AND/OR RAFTERS NECESSARY TO SUPPORT ROOF PANELS.
  - STRUCTURAL INSULATED PANELS (SIPs)
  - VENTED ROOF SYSTEM: 1x3 STRAPPING @ 16" O.C. WITH 5/8" CDX ROOF SHEATHING.
- OR
7. CONVENTIONAL ROOF SYSTEM
  - PRECUT DIMENSIONAL ROOF FRAMING
- OR
- PREFABRICATED DIMENSIONAL ROOF TRUSS SYSTEM (NOT SHOWN)
- 5/8" CDX ROOF SHEATHING.

### CONVENTIONAL FRAMING CONSTRUCTION:

- WALL SYSTEM:**
8. PREFABRICATED eSIP® EXTERIOR WALL SYSTEM: 2x6 WALL FRAMING WITH 7/16" OSB WALL SHEATHING AND 3" OF BOIBASED® SPRAY IN FOAM INSULATION TOTAL SYSTEM = R-20
  - OR
  9. PRECUT DIMENSIONAL EXTERIOR WALLS WITH 7/16" OSB WALL SHEATHING. (W/O FOAM INSULATION)

### ROOF SYSTEM:

10. PRECUT DIMENSIONAL ROOF FRAMING WITH 5/8" CDX ROOF SHEATHING
- OR
11. PREFABRICATED DIMENSIONAL ROOF TRUSS SYSTEM WITH 5/8" CDX ROOF SHEATHING.
- OR
12. PREFABRICATED eSIP ROOF SYSTEM: 2x ROOF FRAMING, SHEATHING AND BIOBASED® SPRAY IN FOAM INSULATION, PER DRAWINGS AND LOCAL CODES. (NOT SHOWN) (TOTAL SYSTEM = R-30 TO R-50)

### EXTERIOR FINISHES:

13. SIDING
  - SHINGLES, CLAPBOARDS, VERTICAL, ECT.
  - CEDAR OR CERTAINTEED®
  - PRE-FINISHED OPTION
14. TRIM
  - CEDAR, CERTAINTEED® OR KLEER®
  - PRE-FINISHED OPTION
15. ROOFING - IKO® 50 YEAR ARCHITECTURAL SHINGLES
16. ROGUE VALLEY® ENTRY DOORS (FIR)
17. MASONITE STEEL DOORS (WHERE REQUIRED, NOT SHOWN)
18. SKYLIGHTS - VELLUX (NOT SHOWN)

19. WINDOWS AND PATIO DOORS
  - EAGLE® – PREMIUM ALUMINUM-CLAD WITH LOW-E INSULATED GLASS, GRILLES, SCREENS, FIR JAMBS, 50 STANDARD COLORS, EXTERIOR CASING (OPTIONAL).
  - INTEGRITY® – FIBERGLASS EXTERIOR, PINE WOOD INTERIOR, LOW-E INSULATED GLASS, GRILLES, SCREENS.

### OPTIONAL ITEMS:

20. INTERIOR TIMBER FRAME STAIRS AND RAILINGS
21. TIMBER FRAME LOFTS – TIMBER JOISTS @ 4' O.C. WITH 2x6 TONGUE & GROVE DECKING (NOT SHOWN)
22. GABLE PORCHES
  - TIMBER FRAME (PER PLANS)
  - PRE-FINISHED TONGUE & GROVE CEILING FINISH
  - PRECUT DIMENSIONAL ROOF FRAMING WITH 5/8" CDX SHEATHING WHERE REQUIRED.
23. FARMERS PORCHES
  - TIMBER FRAME POST AND PLATES
  - PRE-FINISHED TONGUE & GROVE CEILING FINISH
  - PRECUT DIMENSIONAL ROOF FRAMING WITH 5/8" CDX SHEATHING
24. EXTERIOR DECKING AND RAILING SYSTEMS
25. INTERIOR DOORS (NOT SHOWN)
26. INTERIOR FINISH TRIM (NOT SHOWN)

### RECOMMENDED (NOT PROVIDED):

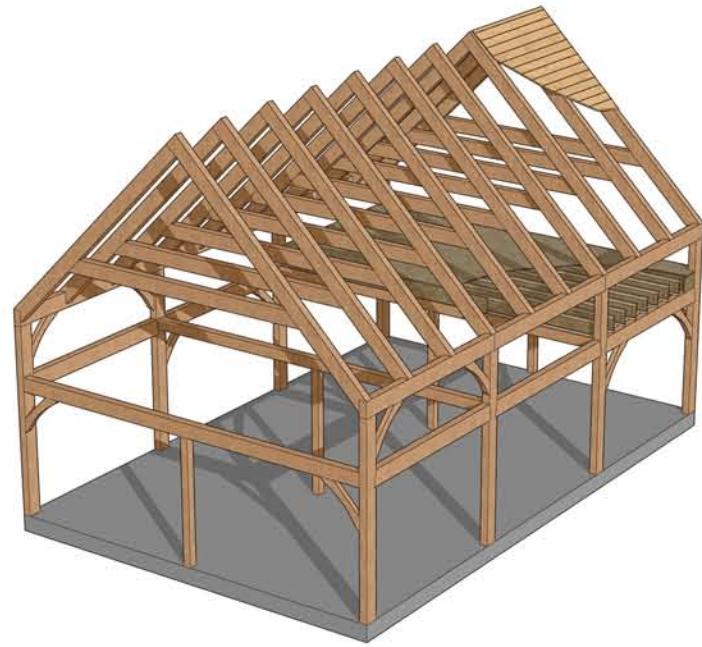
- A. 10" CONCRETE FOUNDATION WITH 2" RIGID INSULATION
- B. 30# FELT PAPER ON ROOFS
- C. 15# FELT PAPER WALLS
- D. HOME SLICKER® MAT UNDER SIDING



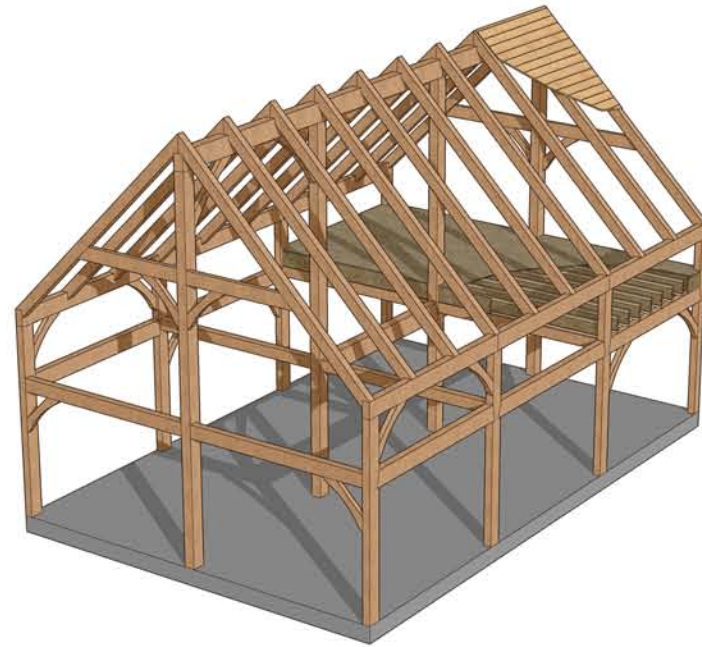
[P] 800.636.0993, [www.davisframe.com](http://www.davisframe.com)

© DAVIS FRAME CO., INC. COPYRIGHT LAWS PROHIBIT REPRODUCTION OR USE OF THIS DRAWING, OR THE ARCHITECTURAL WORK EMBODIED IN IT, IN WHOLE OR IN PART, WITHOUT THE EXPRESS WRITTEN PERMISSION OF DAVIS FRAME CO., INC., CLAREMONT, NEW HAMPSHIRE

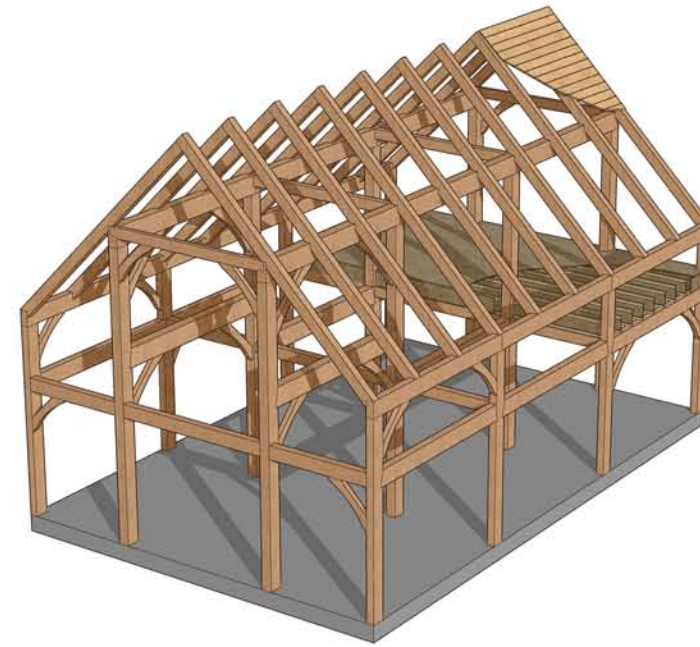
# TIMBER FRAME TYPES



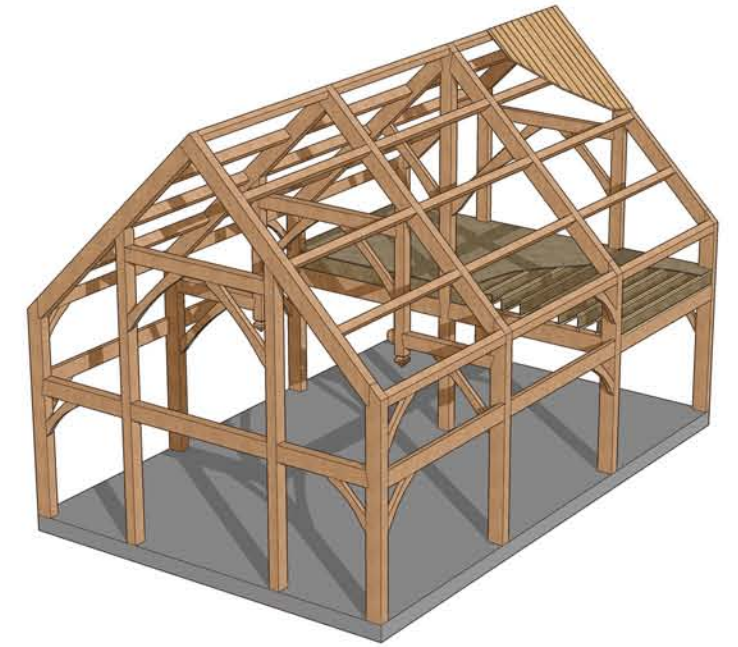
**COLLAR TIE SYSTEM**  
(MAX WIDTH 20'-0" \*)



**RIDGE BEAM SYSTEM**  
(MAX WIDTH 28'-0" \*)



**PRINCIPAL PURLIN SYSTEM**  
(MAX WIDTH 42'-0" \*)



**BENT SYSTEM**  
(MAX WIDTH 42'-0" \*)

## BENT OPTIONS



SCISSOR TRUSS



KING POST TRUSS



KING POST



QUEEN POST TRUSS



QUEEN POST



HAMMER BEAM

## CHAMFER OPTIONS



45 DEGREE



BEADED



[P] 800.636.0993, [www.davisframe.com](http://www.davisframe.com)

\* - MAX WIDTHS MAY VARY DEPENDING ON SITE LOADINGS AND ACTUAL BUILDING PLANS

© DAVIS FRAME CO., INC. COPYRIGHT LAWS PROHIBIT REPRODUCTION OR USE OF THIS DRAWING, OR THE ARCHITECTURAL WORK EMBODIED IN IT, IN WHOLE OR IN PART, WITHOUT THE EXPRESS WRITTEN PERMISSION OF DAVIS FRAME CO., INC., CLAREMONT, NEW HAMPSHIRE