

1 FIRST FLOOR PLAN
WINDOW R.O. HEIGHT 6'-11"

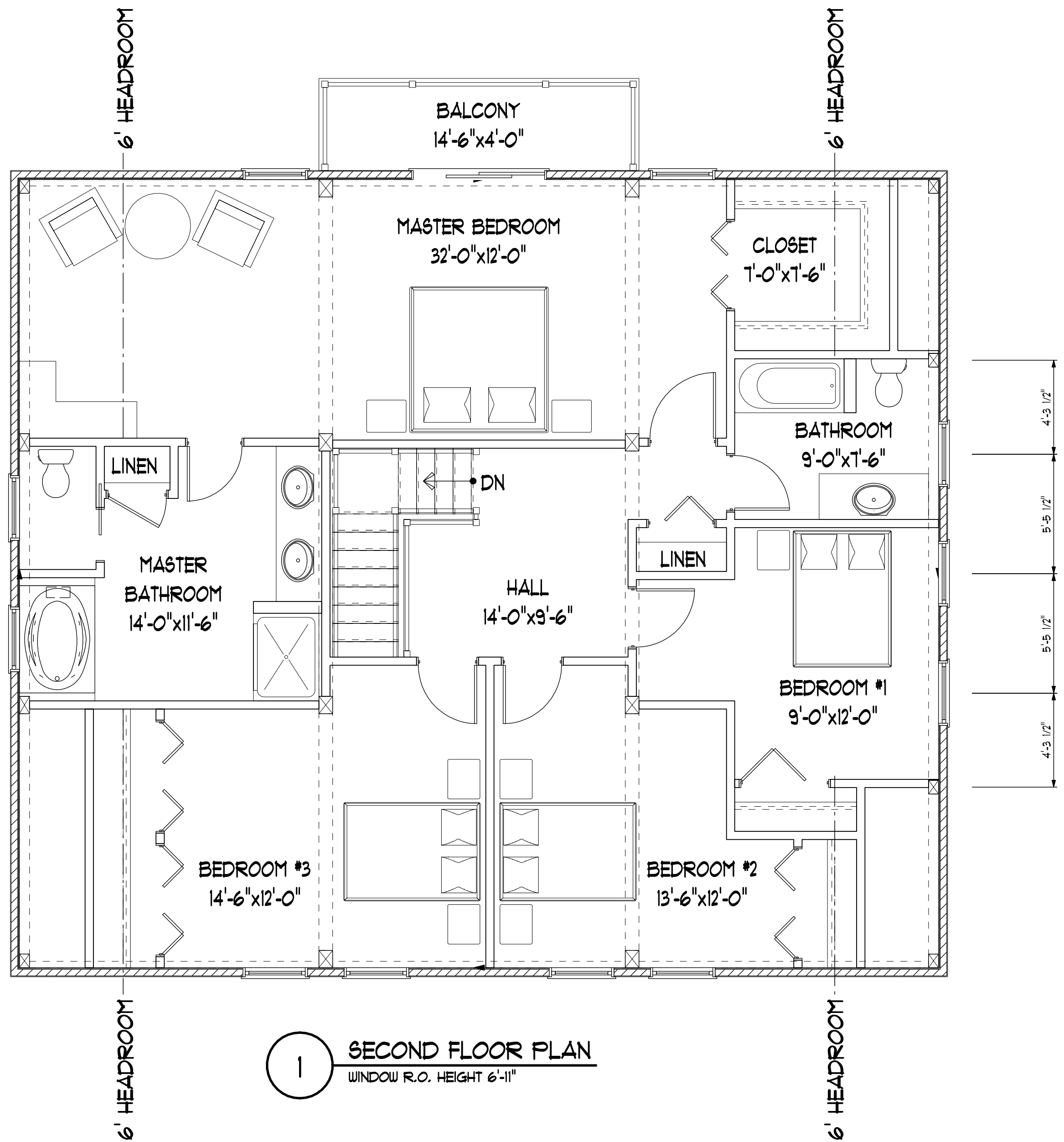
NEITHER THIS DRAWING, NOR THE ARCHITECTURAL WORK DEPICTED IN THIS DRAWING, MAY BE REPRODUCED OR COPIED, IN WHOLE OR IN PART, WITHOUT THE EXPRESSED WRITTEN PERMISSION OF DAYIS FRAME CO., INC. COPYRIGHT 2005 DAYIS FRAME CO., INC.



MODEL: CLASSIC CHALET 2
DRAWING: FIRST FLOOR PLAN

P.O. BOX 1079
CLAREMONT, NH 03743
www.classicbarnhomes.com

PHONE: 603-543-0993
TOLL FREE: 800-636-0993
FAX: 603-690-2031



1 SECOND FLOOR PLAN
WINDOW R.O. HEIGHT 6'-11"

NEITHER THIS DRAWING, NOR THE ARCHITECTURAL WORK DEPICTED IN THIS DRAWING, MAY BE REPRODUCED OR COPIED, IN WHOLE OR IN PART, WITHOUT THE EXPRESSED WRITTEN PERMISSION OF DAYIS FRAME CO., INC. COPYRIGHT 2005 DAYIS FRAME CO., INC.



MODEL: CLASSIC CHALET 2
DRAWING: SECOND FLOOR PLAN

P.O. BOX 1079 CLAREMONT, NH 03743
www.classicbarnhomes.com
PHONE: 603-543-0993
TOLL FREE: 800-636-0993
FAX: 603-690-2031

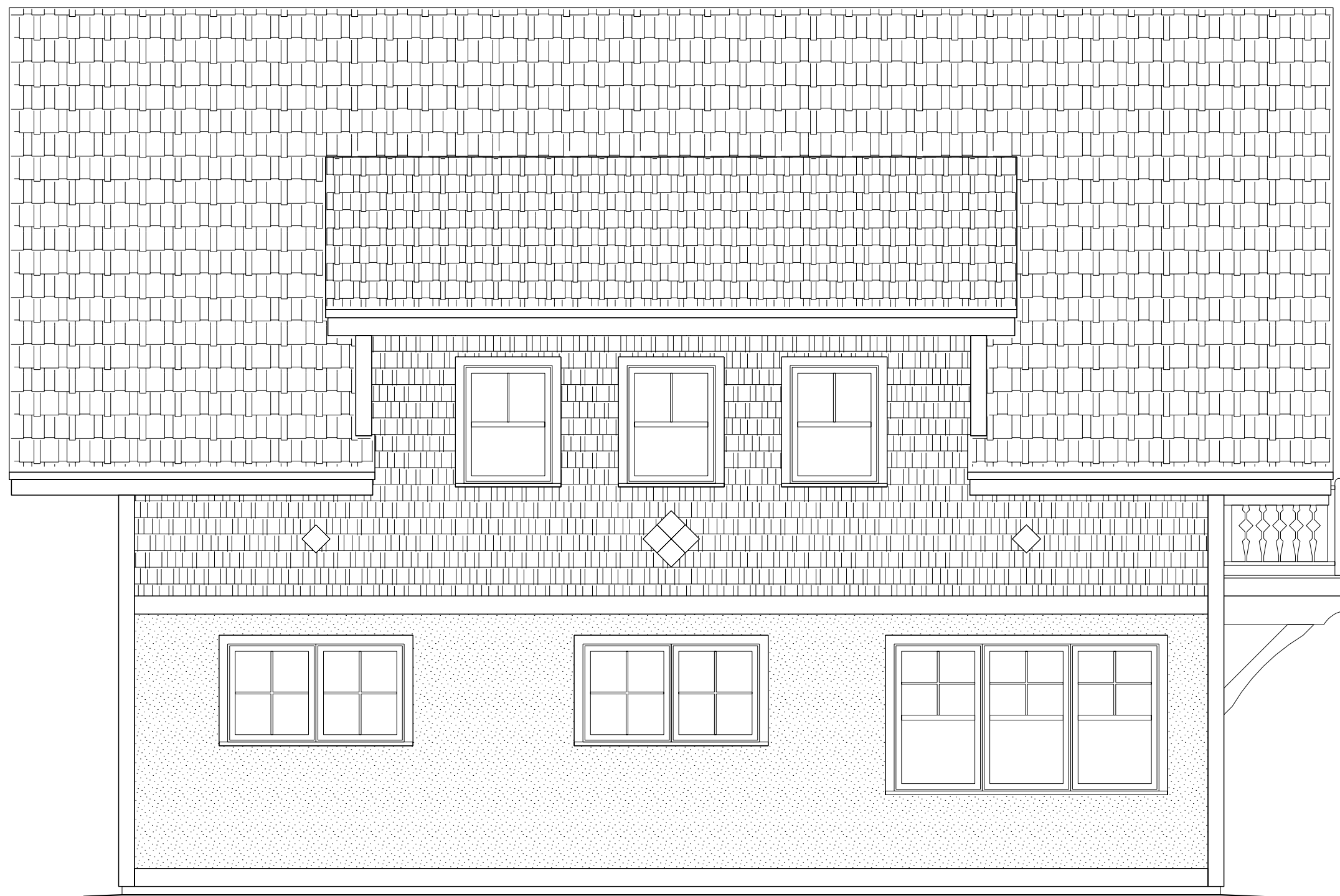


1 FRONT ELEVATION

CLASSIC CHALET 2

SQUARE FOOT PROFILE:
 1st FLOOR = 1512sf
 2nd FLOOR = 1512sf
 TOTAL = 3024sf

TYPE OF FRAME:
 PRINCIPAL PURLIN WITH COMMON RAFTERS



2 LEFT ELEVATION

NEITHER THIS DRAWING, NOR THE ARCHITECTURAL WORK DEPICTED IN THIS DRAWING, MAY BE REPRODUCED OR COPIED, IN WHOLE OR IN PART, WITHOUT THE EXPRESSED WRITTEN PERMISSION OF DAVIS FRAME CO., INC. COPYRIGHT 2005 DAVIS FRAME CO., INC.



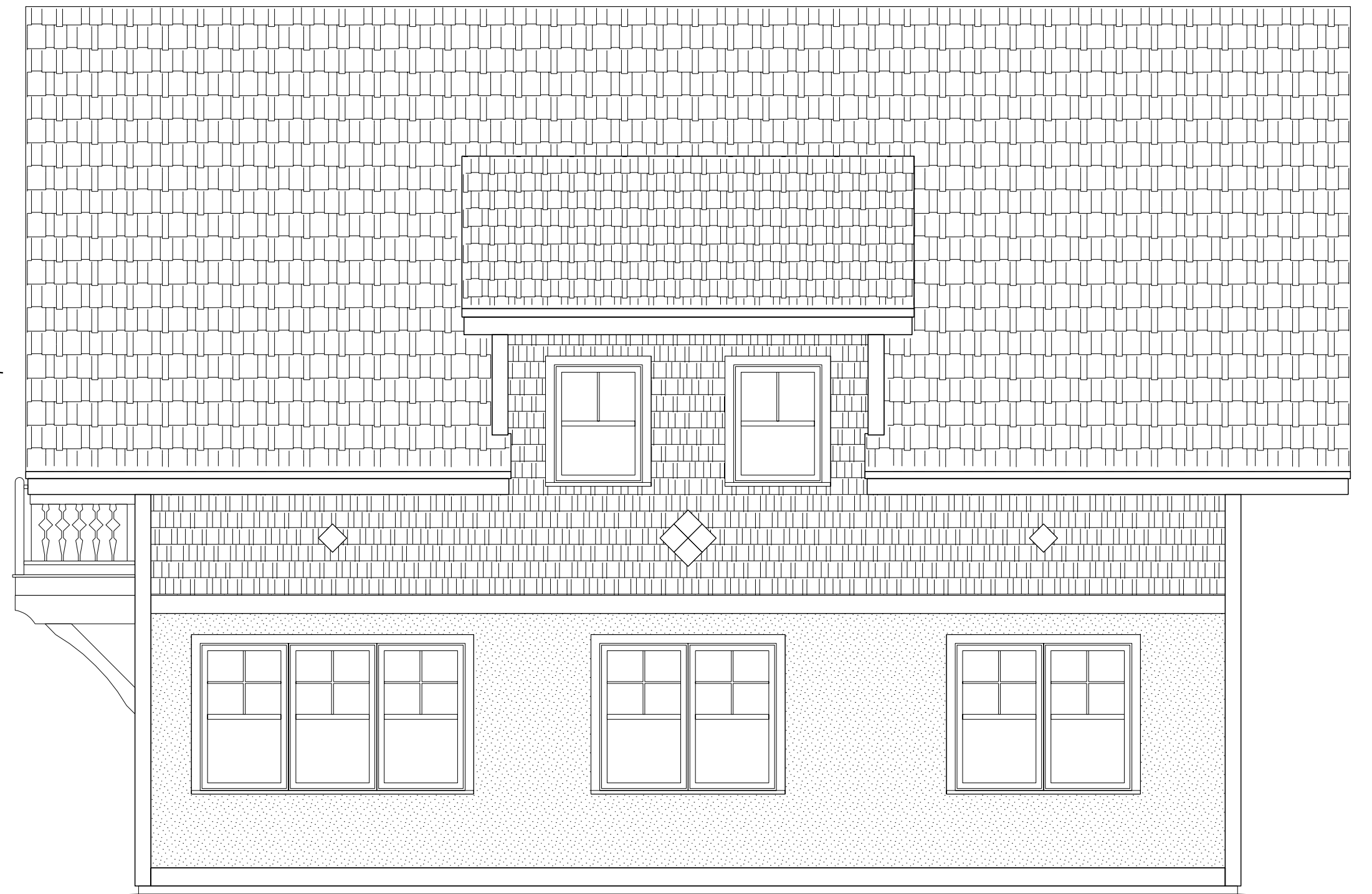
MODEL: CLASSIC CHALET 2
 DRAWING: ELEVATIONS

P.O. BOX 1079
 CLAREMONT, NH 03743
 www.classicbarnhomes.com

PHONE: 603-543-0993
 TOLL FREE: 800-636-0993
 FAX: 603-690-2031



1 REAR ELEVATION



2 RIGHT ELEVATION

NEITHER THIS DRAWING, NOR THE ARCHITECTURAL WORK DEPICTED IN THIS DRAWING, MAY BE REPRODUCED OR COPIED, IN WHOLE OR IN PART, WITHOUT THE EXPRESSED WRITTEN PERMISSION OF DAVIS FRAME CO., INC. COPYRIGHT 2005 DAVIS FRAME CO., INC.


CLASSIC BARN HOMES
 Authentic Timber Frame Homes

MODEL: CLASSIC CHALET 2
 DRAWING:

P.O. BOX 1079
 CLAREMONT, NH 03743
www.classicbarnhomes.com

PHONE: 603-543-0993
 TOLL FREE: 800-636-0993
 FAX: 603-690-2031