

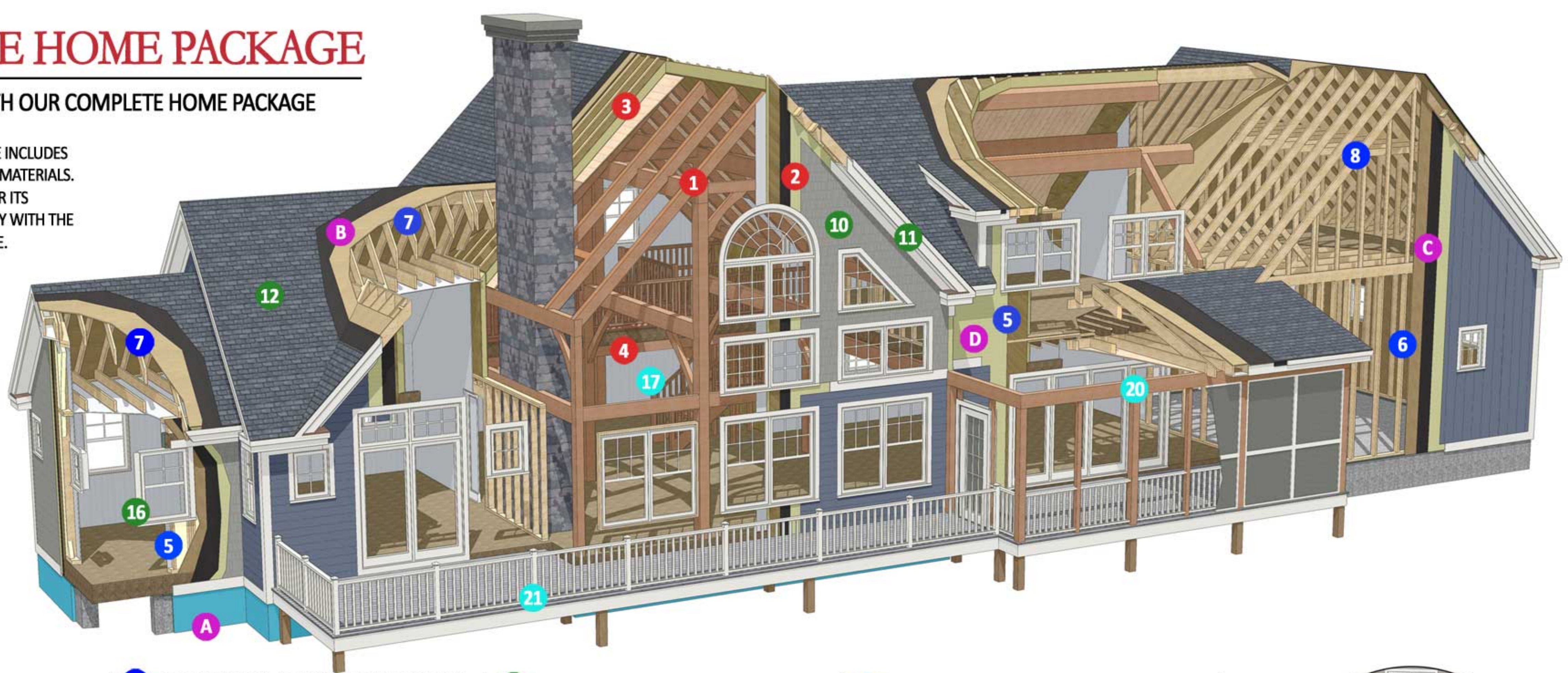
DAVIS FRAME HOME PACKAGE

HERE'S WHAT YOU GET WITH OUR COMPLETE HOME PACKAGE

THE DAVIS FRAME STANDARD PACKAGE INCLUDES AN EXTENSIVE LIST OF COORDINATING MATERIALS. EACH MATERIAL HAS BEEN CHOSEN FOR ITS PREMIUM QUALITY AND COMPATIBILITY WITH THE STYLE AND STRUCTURE OF YOUR HOME.

THE STRUCTURAL COMPONENTS CHOSEN FOR EACH HOME ARE BASED UPON YOUR SPECIFIC SITE LOADINGS AND LOCAL BUILDING CODES.

NO MATTER WHAT MATERIALS YOU CHOOSE, YOU'LL GET THE SAME UNWAVERING COMMITMENT TO QUALITY AND ATTENTION TO DETAIL WHILE BENEFITING FROM OUR MORE THAN 28 YEARS OF EXPERIENCE IN CRAFTING HIGH-PERFORMANCE HOMES.



TIMBER FRAME & SIPS CONSTRUCTION:

1. TIMBER FRAME – MANY CHOICES
 - FRAME TYPE
 - WOOD SPECIES
 - CHAMFER
 - FINISH
 - BRACE TYPE
 FRAME INCLUDES TRADITIONAL MORTISE AND TENON JOINERY, WITH OAK PEGS
2. EXTERIOR WALL SYSTEM (R-23 TO R-40)
 - STRUCTURAL INSULATED PANELS (SIPs)
 - ½" GYPSUM WALL SHEATHING.
3. ROOF SYSTEM (R-37 TO R-52)
 - PRE-FINISHED TONGUE & GROOVE PINE OR GYPSUM CATHEDRAL CEILINGS
 - STRUCTURAL INSULATED PANELS (SIPs)
 - VENTED ROOF SYSTEM: 1x3 STRAPPING @ 16" O.C. WITH 5/8" ADVANTECH ROOF SHEATHING.
4. 2ND FLOOR SYSTEM
 - MANUFACTURED I-JOISTS
 - ¾" ADVANTECH SUBFLOOR

CONVENTIONAL FRAMING CONSTRUCTION:

- WALL SYSTEM:**
5. PREFABRICATED EXTERIOR WALL SYSTEM: 2x6 FRAMER'S SERIES SOUTHERN YELLOW PINE WALL FRAMING WITH 1/2" ADVANTECH WALL SHEATHING AND 3" SPRAY IN FOAM INSULATION TOTAL SYSTEM R20
OR
 6. PRECUT DIMENSIONAL EXTERIOR WALLS WITH 1/2" ADVANTECH WALL SHEATHING. (W/O FOAM INSULATION)
- ROOF SYSTEM:**
7. PRECUT FRAMER'S SERIES SOUTHERN YELLOW PINE DIMENSIONAL ROOF FRAMING WITH 5/8" ADVANTECH ROOF SHEATHING
OR
 8. PREFABRICATED DIMENSIONAL ROOF TRUSS SYSTEM WITH 5/8" ADVANTECH ROOF SHEATHING.
OR
 9. PREFABRICATED ROOF SYSTEM: 2x FRAMER'S SERIES SOUTHERN YELLOW PINE ROOF FRAMING, SHEATHING AND 6" SPRAY IN FOAM INSULATION TOTAL SYSTEM R40 (NOT SHOWN)

EXTERIOR FINISHES:

10. SIDING
 - SHINGLES, CLAPBOARDS, VERTICAL, ETC.
 - CEDAR OR FIBER CEMENT BOARD
 - PRE-FINISHED OPTION
11. TRIM
 - CEDAR OR FIBER CEMENT BOARD
 - PRE-FINISHED OPTION
12. ROOFING - IKO® ARCHITECTURAL SHINGLES
13. ROGUE VALLEY® ENTRY DOORS (FIR)
14. MASONITE FIBER GLASS DOORS (WHERE REQUIRED, NOT SHOWN)
15. SKYLIGHTS - VELUX (NOT SHOWN)
16. WINDOWS AND PATIO DOORS
 - ANDERSEN®
 - MARVIN®
 - INTEGRITY BY MARVIN®

OPTIONAL ITEMS:

17. INTERIOR TIMBER FRAME STAIRS AND RAILINGS
18. TIMBER FRAME LOFTS – TIMBER JOISTS @ 4' O.C. WITH 2x6 TONGUE & GROOVE DECKING (NOT SHOWN)
19. GABLE PORCHES
20. FARMERS PORCHES
21. EXTERIOR DECKING AND RAILING SYSTEMS
22. INTERIOR DOORS (NOT SHOWN)

RECOMMENDED (NOT PROVIDED):

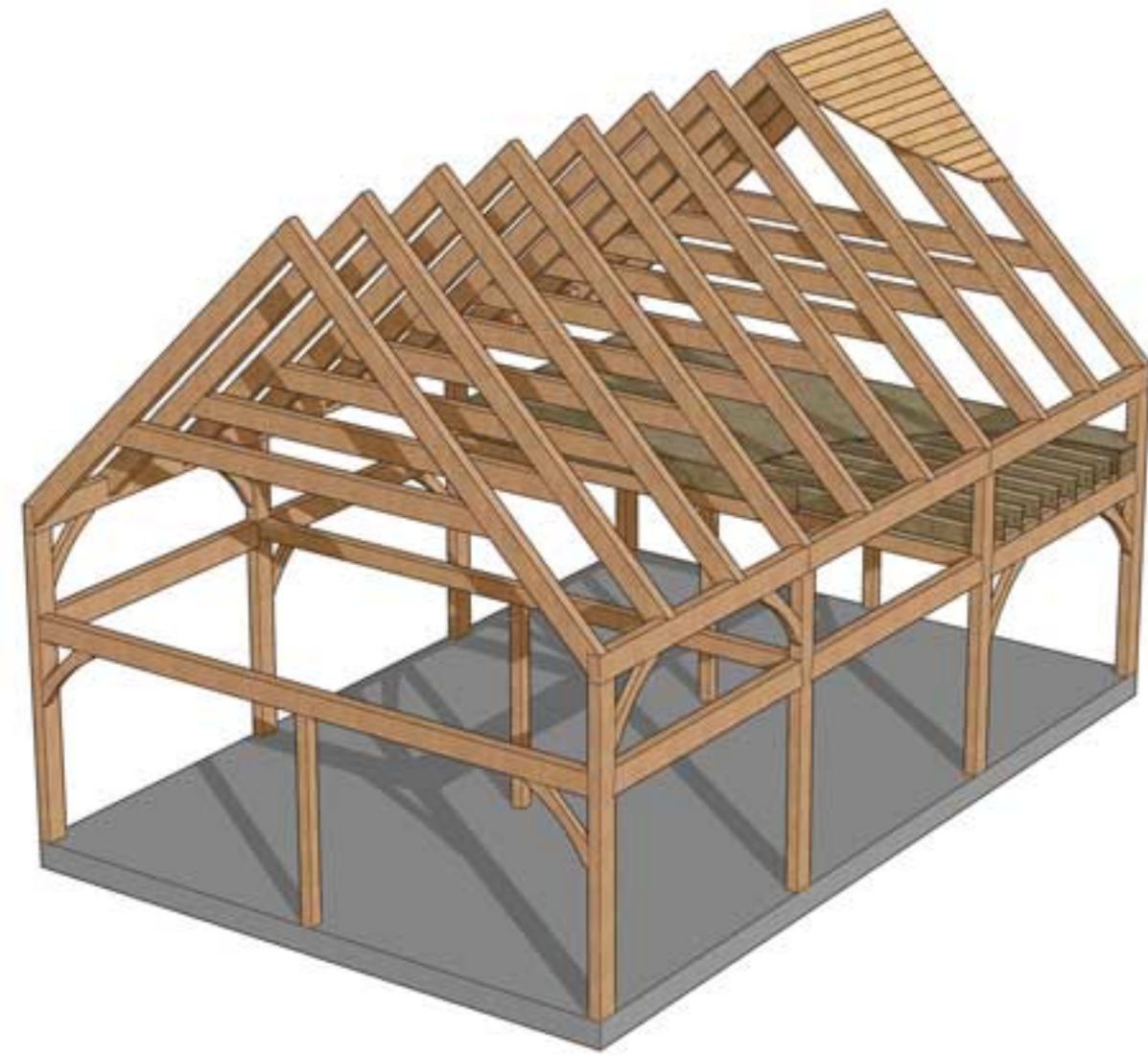
- A. 10" CONCRETE FOUNDATION WITH 2" RIGID INSULATION
- B. 30# FELT PAPER ON ROOFS
- C. 15# FELT PAPER WALLS
- D. HOME SLICKER® MAT UNDER SIDING



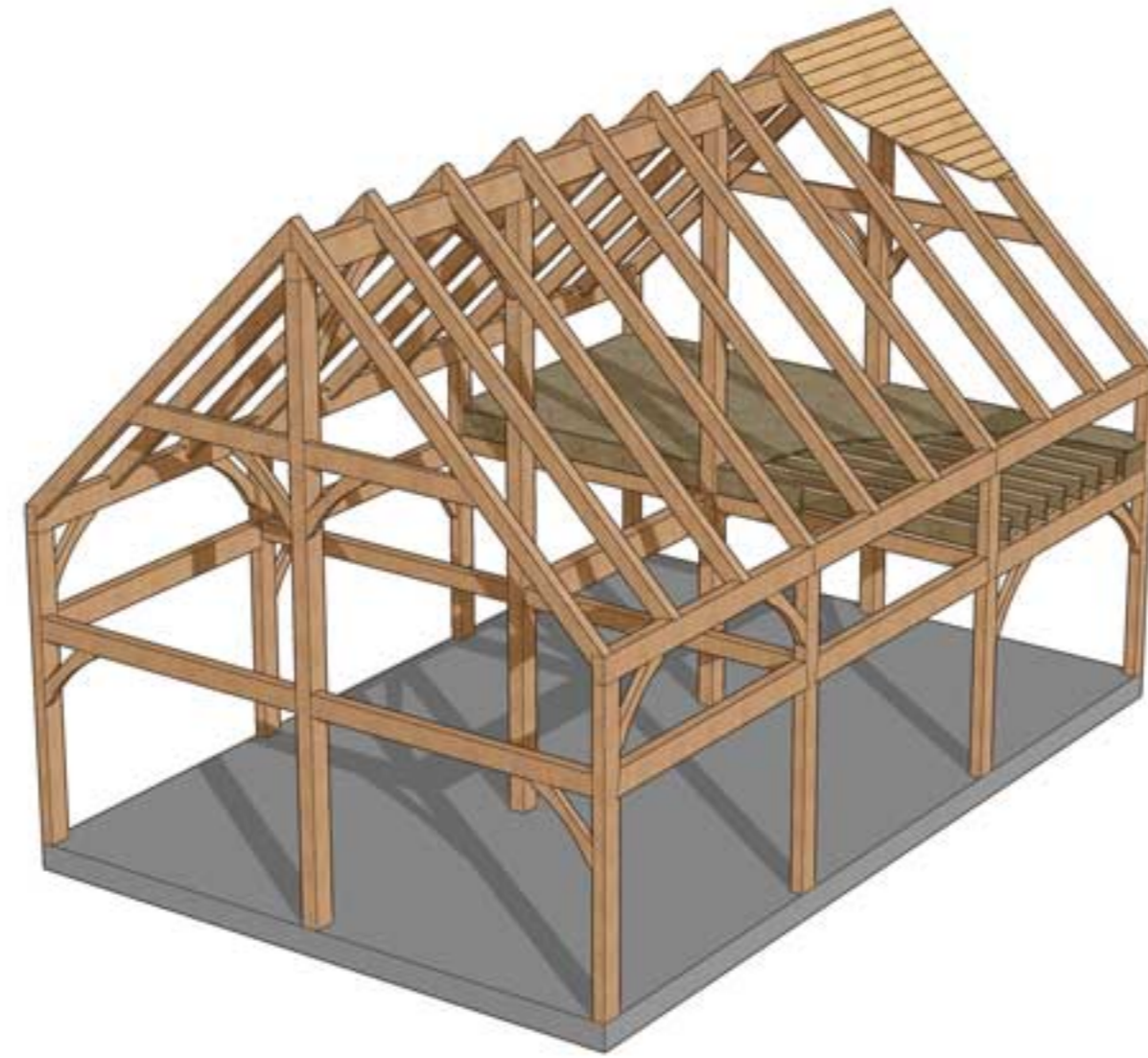
800.636.0993, www.davisframe.com
energysmartpanels.com

© DAVIS FRAME CO., INC. COPYRIGHT LAWS PROHIBIT REPRODUCTION OR USE OF THIS DRAWING, OR THE ARCHITECTURAL WORK EMBODIED IN IT, IN WHOLE OR IN PART, WITHOUT THE EXPRESS WRITTEN PERMISSION OF DAVIS FRAME CO., INC., CLAREMONT, NEW HAMPSHIRE

TIMBER FRAME TYPES



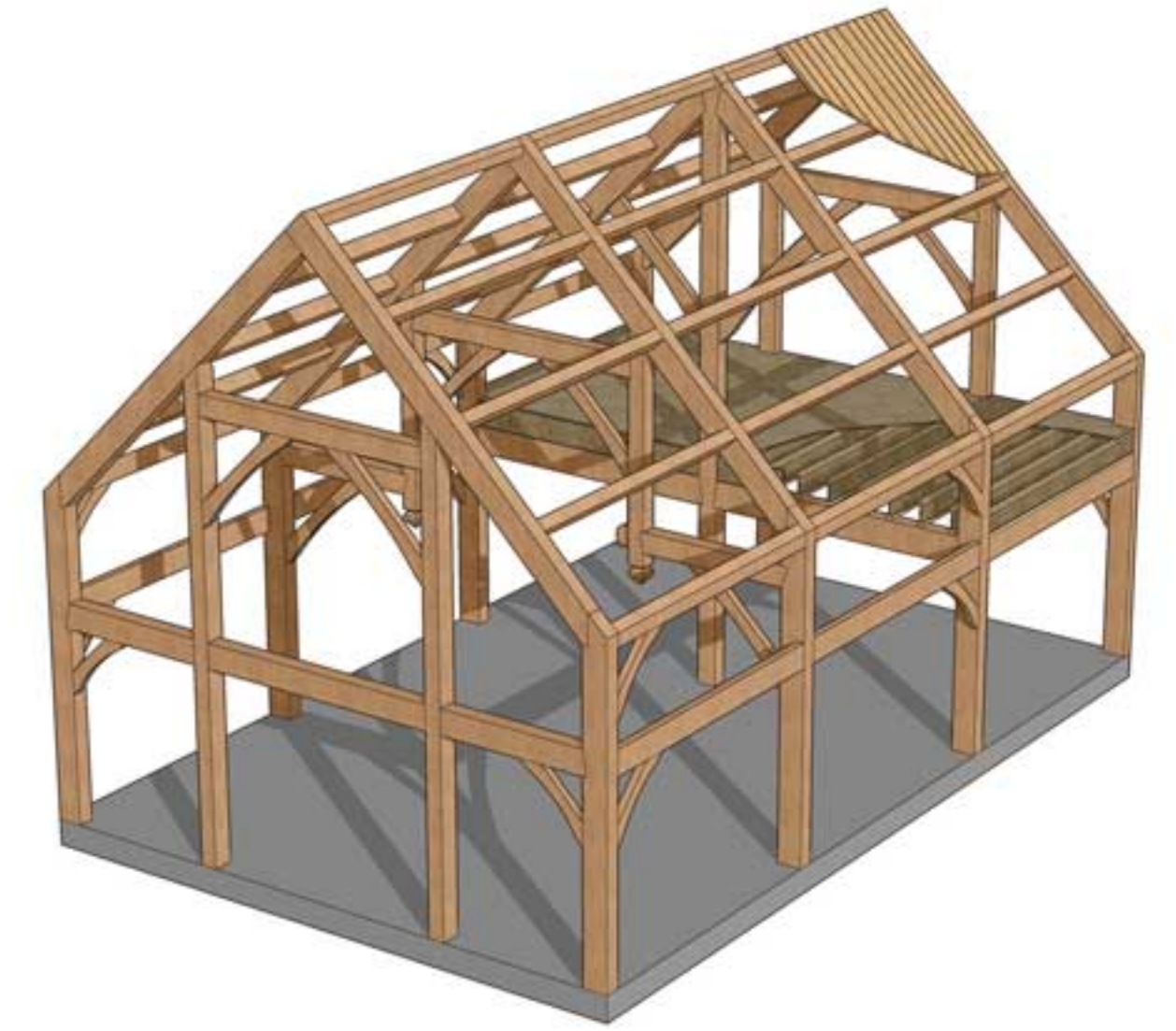
COLLAR TIE SYSTEM
(MAX WIDTH 20'-0" *)



RIDGE BEAM SYSTEM
(MAX WIDTH 28'-0" *)



PRINCIPAL PURLIN SYSTEM
(MAX WIDTH 42'-0" *)



BENT SYSTEM
(MAX WIDTH 42'-0" *)

BENT OPTIONS



SCISSOR TRUSS



KING POST TRUSS



KING POST



QUEEN POST TRUSS



QUEEN POST



HAMMER BEAM

CHAMFER OPTIONS



45 DEGREE



BEADED

* - MAX WIDTHS MAY VARY DEPENDING ON SITE LOADINGS AND ACTUAL BUILDING PLANS